

20  
22

---

**OWZAT-CRICKET**  
[www.owzat-cricket.co.uk](http://www.owzat-cricket.co.uk)

C R I C K E T  
C L O T H I N G

---

WE UNDERSTAND THAT EVERY CLUB HAS DIFFERENT REQUIREMENTS. WE HAVE EVERY ASPECT OF THE GAME COVERED BOTH ON AND OFF THE FIELD ACROSS MENS', LADIES' AND JUNIOR TEAMS!

## TRAINING / LEISUREWEAR KIT

We have a fantastic range of both training kit and leisurewear that can either be purchased and worn as seen or customised to include your club and sponsor logos.

All high quality, performance fabrics – this kit proves to be a favourite with clubs nationwide.



## RED & WHITE BALL PLAYING KIT

Regardless of what format of the game you're playing – we've got your club covered.

Our whites range is traditionally styled whilst boasting the most modern, performance fabrics available.

Our coloured kit options can be designed to your exact requirements and will have you looking like a premier cricket team.



## TOUR AND EVENT KITS

Got an overseas tour coming up or competing in a one-off competition?

We can create you something truly unique and special for your tour. With bespoke design service you can let your creativity go wild.

Our turn around of 5 weeks means you'll be guaranteed to have your kit in time!



## SUPPORT AND COACHING STAFF

An essential part of any team is the coaching and support staff – and it's important you look just as professional as the team on the field.

With a full range of core range kit, we'll make sure that you're support and coaching staff are comfortable in all weather conditions.





## BESPOKE MADE TO ORDER KITS

The made to order clothing option is our top of the range solution for bespoke teamwear, meaning that you are free to be as creative as you like with the option to choose and colour and have any design on your garment, it's all built in!

Push the boundary with your team's kit design by taking full advantage of the flexibility that Masuri's made to order kit provides.

**5 WEEK LEAD TIME**

**FREE DESIGN SERVICE**

**LOW MOQ'S  
(10 GARMENTS)**

**FULLY CUSTOMISED  
CLOTHING**

**PLAY LIKE THE  
PROFESSIONALS**

**NOT SURE WHAT TO DO?  
CONTACT AN ACCOUNT  
MANAGER TODAY  
0800 542 8711**



## PERFECT FOR SPORTS TOURS

You can choose how much or how little made to order kit you'd like. Some clubs choose to just introduce coloured playing shirts and source everything else from our core range, others roll out the concept out across the entire kit range – it's up to you!

### ADVANTAGES OF MTO

100% UNIQUE PLAYING & TRAINING KIT

PROFESSIONAL GAME STYLED KIT

CONSISTENT UNIQUE LOOK ACROSS  
PLAYING, TRAINING & LEISUREWEAR

PERFECT FOR SPECIAL EVENTS OR TOURS

### DISADVANTAGES OF MTO

MORE ADMINISTRATION FOR CLUB  
(BULK ORDERING)

HIGHER MOQ'S THAN CORE RANGE OFFERING

HARDER TO SERVICE NEW MEMBERS / PLAYERS  
IN THE FUTURE (UNLESS YOU HOLD STOCK /  
OVER ORDER)

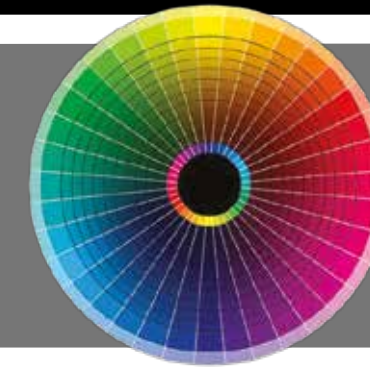
LONGER TERM COMMITMENT



## BESPOKE MADE TO ORDER KITS – DESIGN INSPIRATION

Need some help? Below are some examples of some popular playing shirt designs to help get your creative thoughts going. Once we have established a playing shirt design, we can work together to roll that out across other garments and kit options. These kits are just a guide to styles and designs, if you don't see something suitable, let us know and we can design something just for you!

SEE SOMETHING YOU LIKE? CONTACT OUR SALES TEAM ON 0800 542 8711 WITH ONE OF THE BELOW REFERENCES AND WE CAN GET STARTED MAKING YOUR PERFECT PERFORMANCE PLAYING KIT.



WE CAN CREATE ANY DESIGN IN ANY COLOUR YOU WANT – THE ONLY LIMIT IS YOUR IMAGINATION! CONTACT US TODAY ABOUT DESIGN OPTIONS.

**OWZAT-CRICKET**  
www.owzat-cricket.co.uk



D1S1



D1S2



D1S3



D1S7



D1S4



D1S10



D5S1



D5S3



D5S7



D5S4



D3S1



D3S9



D3S5



D3S7



D3S4



D3S10



D6S2



D6S6



D6S7



D6S4



D2S1



D2S2



D2S6



D2S7



D2S4



D2S10



D6S2



D6S6



D6S7



D6S4



**NEW**



**NEW**



FANCY YOUR OWN CLUBHOUSE ON YOUR SHIRTS? CONTACT AN ACCOUNT MANAGER TODAY 0800 542 8711





## CORE RANGE KIT OPTIONS

Our core range offers your club a range of white and coloured playing / training kit options directly out of our UK based stock holding.

This offers your team a fast and cost effective solution to having great, quality and customisable teamwear.

All core range clothing is stocked, customised and dispatched from Winchester in Hampshire.

**5-10 DAY** LEAD TIME  
**FREE** DESIGN SERVICE  
**NO** MOQ'S

CUSTOMISE WITH **CLUB**  
**AND SPONSOR LOGOS**

**PROFESSIONAL**  
**LOOKING, QUALITY KIT**



**NOT SURE WHAT TO DO?  
CONTACT AN ACCOUNT  
MANAGER TODAY  
0800 542 8711**



**OWZAT-CRICKET**  
www.owzat-cricket.co.uk

## MOST POPULAR OPTION WITH CLUBS

Our most popular options with cricket clubs, you can customise our core range offering with your club logos and sponsors (as little or as many as you'd like) to give each garment a unique feel.

### ADVANTAGES OF CORE RANGE

NO ADMINISTRATION FOR CLUB AFTER SET UP.

NO MOQ'S

PLAYERS AND MEMBERS ORDER AS AND WHEN THEY WANT DIRECTLY.

NO PROBLEM TO 'TOP UP' IN SEASON FOR NEW OR EXISTING MEMBERS (TO REPLACE DAMAGED KIT FOR EXAMPLE)

NO NEED TO HOLD STOCK

### DISADVANTAGES OF CORE RANGE

LIMITED TO THE MASURI CORE RANGE OF CLOTHING.

DESIGN RESTRICTIONS APPLY.

## MENS CRICKET WHITES

SENIOR AND JUNIOR



**COLOUR MATCH THE MASURI LOGO TO YOUR CLUB COLOURS ON ANY CREAM PLAYING GARMENTS**

One of our most popular ranges, the Masuri Playing Whites take the most modern day manufacturing techniques and apply them to a traditional look and feel, the result – great looking performance playing kit.



Colour match the Masuri logo to your club colours on any cream playing garments

**2 LOGOS INCLUDED**

**SHORT SLEEVE PLAYING SHIRT**  
**MCR0046**

**LONG SLEEVE PLAYING SHIRT**  
**MCR0055**

Playing shirt with 3 button placket and self fabric collar. Raglan open cuff sleeve for comfort and range of movement. The moisture management fabric transports moisture from your skin keeping you dry, cool and comfortable. Masuri logo on right chest. Regular fit. Perform at your peak wearing our lightweight playing shirt with enhanced breathability and ergonomic panelling for improved range of movement.

**SENIOR SIZES:** XS – 4XL  
**JUNIOR SIZES:** 7-8 YEARS TO 13-14 YEARS

**COMPOSITION:** 100% Polyester Micromesh (165gsm)  
Available in regular fit



**1 LOGO INCLUDED**

**PLAYING TROUSERS**  
**MCR0059**

Cricket playing trouser designed with quality and comfort in mind. Elasticated waist with drawcord close for adjustability and two side seam pockets. Masuri logo on right leg. Regular fit.

**SENIOR SIZES:** XS-4XL  
**JUNIOR SIZES:** 7-8YEARS TO 13-14 YEARS

**COMPOSITION:** 100% Polyester Micromesh (190gsm). Available in regular fit



**2 LOGOS INCLUDED**

**SLEEVELESS PLAYING SWEATER**  
**MCR0056**

**LONG SLEEVE PLAYING SWEATER**  
**MCR0057**

Unisex slipover with side panels. Ribbed V-neck collar, armholes and hem. Designed for warmth and comfort without restricting movement. Masuri logo on right chest. Regular fit.

**SENIOR SIZES:** XS – 4XL  
**JUNIOR SIZES:** 7-8YEARS TO 13-14 YEARS

**COMPOSITION:** Main Fabric (Shell): 100% Polyester Micromesh (165gsm) 2nd Fabric (Lining): 100% Polyester fleece (200gsm)

**DON'T FORGET YOUR HELMET.**  
**SEE PAGE 20**



## SUBLIMATION

All logos on playing garments are sublimated. It is a modern technology and is preferred by professional teams. Advantages of sublimation include; exact logo representation, excellent wash durability (100's of washes at 90 degrees), no peeling/cracking/colour running and no additional weight added to the garment.





# LADIES CRICKET WHITES

SENIOR AND JUNIOR

One of our most popular ranges, the Masuri Playing Whites take the most modern day manufacturing techniques and apply them to a traditional look and feel, the result – great looking performance playing kit.



COLOUR MATCH THE MASURI LOGO TO YOUR CLUB COLOURS ON ANY CREAM PLAYING GARMENTS



Colour match the Masuri logo to your club colours on any cream playing garments

2 LOGOS INCLUDED

## LADIES SHORT SLEEVE PLAYING SHIRT MCR006 (JUNIOR MCR0046)

Playing shirt with 3 button placket and self fabric collar. Raglan open cuff sleeve for comfort and range of movement. The moisture management fabric transports moisture from your skin keeping you dry, cool and comfortable. Masuri logo on right chest. Regular fit.

SENIOR SIZES: 6-18  
JUNIOR SIZES: 7-8YEARS TO 13-14 YEARS

COMPOSITION: 100% Polyester Micromesh (165gsm)



1 LOGO INCLUDED

## LADIES PLAYING TROUSERS MCR0059

Cricket playing trouser designed with quality and comfort in mind. Elasticated waist with drawcord close for adjustability and two side seam pockets. Masuri logo on right leg. Regular fit.

SENIOR SIZES: 6-18  
JUNIOR SIZES: 7-8 YEARS TO 13-14 YEARS

COMPOSITION: 100% Polyester Micromesh (190gsm). Available in regular fit



2 LOGOS INCLUDED

## SLEEVELESS PLAYING SWEATER MCR0056

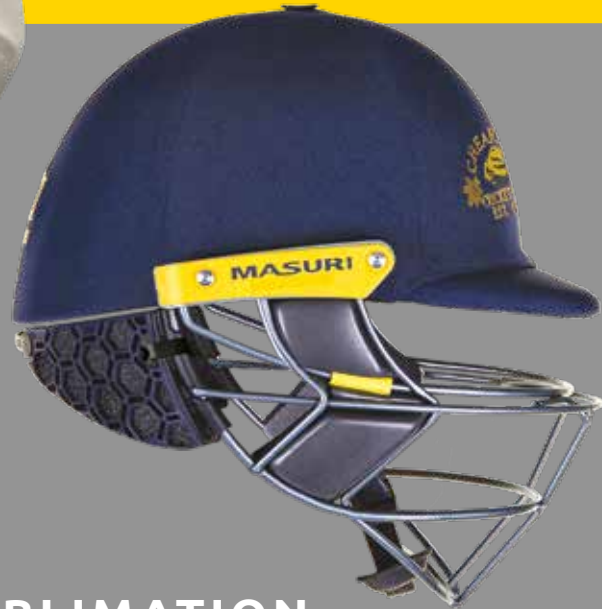
## LONG SLEEVE PLAYING SWEATER MCR0057

Unisex slipover with side panels. Ribbed V-neck collar, armholes and hem. Designed for warmth and comfort without restricting movement. Masuri logo on right chest. Regular fit.

SENIOR SIZES: XS – 4XL  
JUNIOR SIZES: 7-8 YEARS TO 13-14 YEARS

COMPOSITION: Main Fabric (Shell): 100% Polyester Micromesh (165gsm)2nd Fabric (Lining): 100% Polyester fleece (200gsm)

DON'T FORGET YOUR HELMET.  
**SEE PAGE 20**



## SUBLIMATION

All logos on playing garments are sublimated. It is a modern technology and is preferred by professional teams. Advantages of sublimation include; exact logo representation, excellent wash durability (100's of washes at 90 degrees), no peeling/cracking/colour running and no additional weight added to the garment.



## COLOURED PLAYING KITS

### SENIOR AND JUNIOR

Introducing our brand-new coloured playing kit range for the 2022 season. With more and more leagues switching to coloured kits, we have developed a solution for any white ball teamwear requirement. Building on the success and popularity of our whites, our offering now includes an extensive range of coloured playing shirts and trousers, providing a truly bespoke look for your team. All coloured playing items utilise our latest state-of-the-art logo printing technology, ensuring your players look and feel like the pros.



Cricket Wales playing shirts created from our core range of coloured garments.



#### SHORT SLEEVE PLAYING SHIRT MCR0046

Playing shirt with 3 button placket and self fabric collar. Raglan open cuff sleeve for comfort and range of movement. The moisture management fabric transports moisture from your skin keeping you dry, cool and comfortable. Masuri logo on right chest. Regular fit. Perform at your peak wearing our lightweight playing shirt with enhanced breathability and ergonomic panelling for improved range of movement.

**SENIOR SIZES:** XS – 3XL  
**JUNIOR SIZES:** 7-8 YEARS

**COMPOSITION:** 100% Polyester Micromesh (165gsm) Available in regular fit

**FRONT PANEL  
LOGOS INCLUDED**  
(CLUB LOGO, MASURI  
LOGO & FRONT SPONSOR)

**\* SLEEVE LOGOS  
NOT INCLUDED**



**1 LOGO  
INCLUDED**

#### UNISEX PLAYING TROUSERS MCR0059

Cricket playing trouser designed with quality and comfort in mind. Elasticated waist with drawcord close for adjustability and two side seam pockets. Masuri logo on right leg. Regular fit.

**SENIOR:** XS – 3XL  
**JUNIOR:** 7-8 years – 13-14 years

**COMPOSITION:** 100% Polyester Micromesh (190gsm).



**FRONT PANEL  
LOGOS INCLUDED**  
(CLUB LOGO, MASURI  
LOGO & FRONT SPONSOR)

**\* SLEEVE LOGOS  
NOT INCLUDED**

#### LONG SLEEVE PLAYING SWEATER MCR0070

Long sleeve sweater. Ribbed V-neck collar, cuffs. A lighter weight option compared to our cream sweaters. Designed to offer additional warmth and comfort without restricting movement. Masuri logo on right chest. Regular fit.

**SENIOR SIZES:** XS – 3XL  
**JUNIOR SIZES:** 7-8 YEARS TO 13-14 YEARS

**COMPOSITION:** 100% Polyester fleece (330gsm)

**COMING  
SOON**

**LONG SLEEVE  
SLIPOVERS IN  
8 COLOURS COMING  
IN MARCH 2022**

**CONTACT OUR SALES TEAM  
TODAY FOR MORE INFO**

**0800 542 8711**



## COLOURED TRAINING SHIRTS

### SENIOR AND JUNIOR

Our wide range of training shirt options give you the ability to perfect your teams custom look whilst training, warming up, or on the side line. Available in Men's, Ladies and Junior fit.



### MENS (PLAYING) TRAINING T-SHIRT MCR0002

Short Sleeve T-shirt with contrast side panels. Set in sleeve for comfort and range of movement with double contrast cuff. The moisture management fabric transports moisture from your skin keeping you dry, cool and comfortable. Masuri embroidery on right chest. Side seam tab on left seam. Regular Fit.

**SENIOR:** XS – 3XL

**JUNIOR:** 7-8 years – 13-14 years

**COMPOSITION:** 100% Polyester Micromesh (190gsm). Available in regular fit



### LADIES (PLAYING) TRAINING T-SHIRT MCR0007 (JUNIOR MCR0002)

Short Sleeve T-shirt with contrast side panels. Set in sleeve for comfort and range of movement with double contrast cuff. The moisture management fabric transports moisture from your skin keeping you dry, cool and comfortable. Masuri embroidery on right chest. Side seam tab on left seam. Regular Fit.

**Ladies':** 6 – 18

**COMPOSITION:** 100% Polyester Micromesh (165gsm).

## DID YOU KNOW..?

More and more clubs are now servicing their junior teams with the Masuri coloured t-shirt range.

Are you in need of great quality, cost effective kit for your juniors?

**CONTACT OUR SALES TEAM TODAY**

**0800 542 8711**

# MENS TRAINING AND LEISURE KITS

SENIOR AND JUNIOR



**POLO SHIRT**  
**MCR0060**

Short Sleeve shirt with 2 button placket. Soft hand feel fabric with a solid rib collar and open sleeves giving comfort without losing style. Masuri embroidery on right chest. Side seam tab on left seam. Regular fit.

**SENIOR:** XS – 4XL  
**JUNIOR:** 7-8 years – 13-14 years

**COMPOSITION:** 65% Cotton, 35% Polyester Pique (200gsm)



**FULL ZIP TECH FLEECE**  
**MCR0062**

High neck zip front jacket with straight hem, forward shoulder and side seam pockets. Masuri embroidery on right chest. Side seam tab on left seam. Regular fit.

**SENIOR:** XS – 4XL  
**JUNIOR:** 7-8 years – 13-14 years

**COMPOSITION:** 100% Polyester Tech-fleece (250gsm)



**HOODIE**  
**MCR0003**

Long Sleeve hooded sweatshirt with ribbed cuff and hem for comfort and warmth. Front seam pockets making this practical and stylish. Masuri embroidery on right chest. Side seam tab on front left seam. Regular Fit.

**SENIOR:** XS – 4XL  
**JUNIOR:** 7-8 years – 13-14 years

**COMPOSITION:** Main Fabric (Body): 100% Polyester Tech-fleece (250gsm)



**GILET**  
**MCR0061**

Full zip gilet with high neck collar, scoop back hem, forward shoulder. Self-binding armhole and front zipped welt pockets. Masuri embroidery on right chest. Side seam tab on left seam.

**SENIOR:** XS – 4XL  
**JUNIOR:** 7-8 years – 13-14 years

**COMPOSITION:** 100% Polyester Tech-fleece (250gsm)



**TRACKSUIT BOTTOMS**  
**MCR0063**

Tracksuit Trouser with microfibre back yoke panel and gusset for greater freedom of movement. Flat front elastic waistband with drawcord close for adjustability. Side leg zippers for easy shoe access and side seam pockets. Masuri embroidery on right leg. Side seam tab on left seam.

**SENIOR:** XS – 3XL  
**JUNIOR:** 7-8 years – 13-14 years

**COMPOSITION:** Main Fabric (shell): 100% Polyester Ripstop (110gsm)



**SLIMFIT TROUSERS**  
**MCR0031 (MCR0031 JUNIOR)**

A tapered fit with an elasticated waistband and an internal drawstring cord for ease of fit. The fabric used adds comfort and flexibility for use either as leisurewear or in training.

This items comes with two zip pockets.

**SIZE: Senior:** XS – 3XL  
**Junior:** 7-8 years – 13-14 years



**SHORTS**  
**MCR0004**

Training shorts with microfibre back yoke panel and gusset for greater freedom of movement. Flat front elastic waistband with drawcord close for adjustability with side seam hand pockets. Masuri embroidery on right leg. Side seam tab on left seam.

**SENIOR:** XS – 4XL  
**JUNIOR:** 7-8 years – 13-14 years

**COMPOSITION:** 100% Polyester Tech-fleece (250gsm)





# LADIES TRAINING AND LEISURE KITS

SENIOR AND JUNIOR



LADIES POLO SHIRT  
MCR0060

Short sleeve shirt with 2 button placket. Soft hand feel fabric with a solid rib collar and open sleeves giving comfort without loosing style. Masuri embroidery on right chest. Side seam tab on left seam. Regular fit.

**SENIOR:** 6-18  
**JUNIOR:** 7-8 years – 13-14 years

**COMPOSITION:** 65% Cotton, 35% Polyester Pique (200gsm)



LADIES FULL ZIP TECH FLEECE  
MCR0062

High neck zip front jacket with straight hem, forward shoulder and side seam pockets. Masuri embroidery on right chest. Side seam tab on left seam. Regular fit.

**SENIOR:** 6-18  
**JUNIOR:** 7-8 years – 13-14 years

**COMPOSITION:** 100% Polyester Tech-fleece (250 gsm)



UNISEX HOODIE  
MCR0003

Unisex long sleeve hooded sweatshirt with ribbed cuff and hem for comfort and warmth. Front seam pockets making this practical and stylish. Masuri embroidery on right chest. Side seam tab on front left seam. Regular Fit.

**SENIOR:** XS – 4XL  
**JUNIOR:** 7-8 years – 13-14 years

**COMPOSITION:** Main Fabric (Body): 100% Polyester Tech-fleece (250gsm)



UNISEX GILET  
MCR0061

Unisex full zip gilet with high neck collar, scoop back hem, forward shoulder. Self-binding armhole and front zipped welt pockets. Masuri embroidery on right chest. Side seam tab on left seam.

**SENIOR:** 6–18  
**JUNIOR:** 7-8 years – 13-14 years

**COMPOSITION:** 100% Polyester Tech-fleece (250gsm)



LADIES TRACKSUIT BOTTOMS  
MCR0095 (JUNIOR MCR0063)

Tracksuit Trouser with microfibre back yoke panel and gusset for greater freedom of movement. Flat front elastic waistband with drawcord close for adjustability. Side leg zippers for easy shoe access and side seam pockets. Masuri embroidery on right leg. Side seam tab on left seam.

**SENIOR:** 6-18  
**JUNIOR:** 7-8 years – 13-14 years

**COMPOSITION:** Main Fabric (shell): 100% Polyester Ripstop (110gsm)



LADIES SLIMFIT TROUSERS  
MCR0031 (MCR0031 JUNIOR)

A tapered fit with an elasticated waistband and an internal drawstring cord for ease of fit. The fabric used adds comfort and flexibility for use either as leisurewear or in training.

This items comes with two zip pockets.

**SENIOR:** 6–18  
**JUNIOR:** 7-8 years – 13-14 years



LADIES SHORTS  
MCR0010 (JUNIOR MCR0010)

Training shorts with microfibre back yoke panel and gusset for greater freedom of movement. Flat front elastic waistband with drawcord close for adjustability with side seam hand pockets. Masuri embroidery on right leg. Side seam tab on left seam.

**SENIOR:** 6-18  
**JUNIOR:** 7-8 years – 13-14 years

**COMPOSITION:** Main Fabric (Shell): 100% Polyester Ripstop (110gsm)



SKORT  
MCR0009

**Ladies:** £22.99      **Junior:** £19.16

Skort with microfibre back yoke panel and gusset for greater freedom of movement. Flat front elastic waistband with drawcord close for adjustability with side seam hand pockets. Masuri embroidery on right leg. Side seam tab on left seam.

**LADIES':** 6–18  
**JUNIOR:** 7-8 years – 13-14 years

**COMPOSITION:** Main Fabric (Shell): 100% Polyester Ripstop (110gsm)





## OUTERWEAR

### SENIOR AND JUNIOR

#### WATERPROOF JACKET WITH FLEECE LINING MAS045

Keep it smart and stylish. This unisex jacket comes with all the qualities of a winter jacket, packaged up in an on-trend bomber design. The jacket boasts many qualities; it's waterproof, windproof, has taped seams and comes with a cosy fleece lining.

**COMPOSITION:** 100% polyester, 195gsm

**COLOURS:** Navy, Black

**SIZE:** Senior XS-4XL,  
Junior 3-4, 5-6, 7-8, 9-10, 11-12



#### RAINCOAT MAS205X

Lightweight coat with a breathable back and vented chest which folds away into it's own pocket.

**COMPOSITION:**  
190T Polyester StormDri  
2000 PU coating. 70gsm  
breathable poly mesh lining.

**COLOURS:** Navy, Black

**SIZE:** Senior XS-2XL

#### SOFT SHELL JACKET MAS120

A warm backed woven stretch softshell fabric. This item is has a durable water-repellent finish to keep you dry and comes with integral hood with adjusters for comfort.

**COMPOSITION:** 100% polyester, 270gsm

**COLOURS:** Navy, Black

**SIZE:** Ladies 8-18  
Mens S-3XL, Junior XS-2XL





# BOOT AND KIT BAGS



BOOT BAG  
MAS076

Personalised bootbag designed with webbing carrying handle. Easy to use and has a wipe-clean interior based material.

COMPOSITION: 420D Polyester

COLOURS: Navy, Black

WEIGHT: 260g



RUCKSACK  
MAS057

Ergonomic padded back panel with a media pocket and headphone port including a water bottle holder.

COMPOSITION: 600D Micro rip-stop polyester

COLOURS: Navy, Black

WEIGHT: 720g



HOLDALL  
MAS270

Detachable adjustable shoulder strap with pad. Shoe tunnel/wet pocket. Internal valuables pocket. Elasticated bottle loops. Zippered end pockets. Internal mesh pockets. Padded hand grip.

COMPOSITION: 600D/420D Polyester Combination

COLOURS: Navy, Black

WEIGHT: 1220g



THERMAL CONTOURED JACKET  
MAS784

Water repellent 100% textured polyester 105gsm outer fabric combined with high loft 140gsm thermal wadding, it's extremely warm for the coldest weather.

This garment offers something different to more typical touchline or managers jackets with a host of features such as internal powerstretch cuffs, 2 access zips for embroidery, internal pocket and a gathered internal lining to enhance overall fit.

COMPOSITION: 600D/420D Polyester Combination

COLOURS: Navy, Black

SIZE: Senior S-XXXL  
Junior SY-XLY

FULL LENGTH WINTER JACKET  
MAS827

A full length, extended version of the Contoured Thermal Jacket, keeping your whole body warm whether you're stood around on Winter training pitches or waiting for your moment off the bench on a matchday, you need to hit the ground running.

COMPOSITION: 600D/420D Polyester Combination

COLOURS: Navy, Black

SIZE: Senior M/L - XL/XXL  
Junior MY/LY - XLY/S



# HEADWEAR

SENIOR AND JUNIOR



CLUB LOGOS INCLUDED HERE

**SINGLESHELL**  
PROTECTION SYSTEM

**AIRFLOW**  
COOLING SYSTEM

**EYE-LINE**  
GRILLE SYSTEM  
Patent protected GB2498490

**PRO-FOAMS**



**FLEXFIT CAPS**  
**FFC2277**

The Flexfit® cotton combed is a mid profile cap with Permacurv® technology that maintains its proper shape and curve at all times. This baseball cap has the look and feel of combed cotton for a premium finish and an athletic shape.

**COMPOSITION:** 63% Polyester, 34% Cotton, 3% Spandex

**COLOURS:** Navy, Royal Blue, Maroon, Emerald Green, Black and Red

**SIZE:** Small/Medium OR Large/X-Large



**COTTON DRILL CAP**  
**MAS015**

Modern 5 panel design with a pre-curved peak and stitched ventilation eyelets. A Rip-Strip™ size adjuster allows this cap to be worn by all ages.

**COMPOSITION:** 100% Cotton Drill

**COLOURS:** Navy, Royal Blue, Maroon, Emerald Green, Black and Red

**SIZE:** One size fits all



**BEANIES**  
**MAS045**

Double layer knit. Cuffed design for optimal decoration.

**COMPOSITION:** 100% Cotton Drill

**COLOURS:** Navy, Royal Blue, Maroon, Emerald Green, Black and Red

**SIZE:** One size fits all





MASURI SIZING

1 Bust

2 Waist

3 Hip

4 Inside Leg

**HOW TO MEASURE**  
If you are the borderline between two sizes, select the smaller size for a tighter fit or the larger size for a looser fit.

**Bust** - Measure all the way round - across fullest part of the chest. Try to keep tape level.

**Waist** - Measure all the way round - Taking the tape around the natural waistline.

**Hip** - Measure all the way round - Taking the tape around the widest part of the bottom.

**Inside Leg** - Unlike the other measurements which are body measurements, the inside leg measurement corresponds to the length on the trousers. Measure from the crotch to where your trousers normally wear on the shoe.

MEASUREMENT - cm	6	8	10	12	14	16	18	20
Chest - Bust	76cm	81cm	86cm	91cm	97cm	103cm	108cm	114cm
Waist	61cm	66cm	71cm	76cm	81cm	86cm	91cm	96cm
Hip	86cm	91cm	96cm	101cm	106cm	111cm	116cm	121cm
Inside Leg	71cm	72cm	73cm	74cm	75cm	76cm	77cm	78cm

MEASUREMENT - inches	6	8	10	12	14	16	18	20
Chest - Bust	30"	32"	34"	36"	38"	40"	42"	45"
Waist	24"	26"	28"	30"	32"	34"	36"	38"
Hip	34"	36"	38"	40"	42"	44"	46"	48"
Inside Leg	28"	28 1/2"	29"	29 1/2"	30"	30 1/2"	31"	31 1/2"

Netball Dress Lengths - inches/cm	6	8	10	12	14	16	18	20
Short - Centre Back	7	8 1/2" / 21cm	9 1/2" / 24cm	10 1/2" / 26cm	11 1/2" / 29cm	12 1/2" / 31cm	13 1/2" / 34cm	14 1/2" / 36cm
Regular - Centre Back	7	8 1/2" / 21cm	9 1/2" / 24cm	10 1/2" / 26cm	11 1/2" / 29cm	12 1/2" / 31cm	13 1/2" / 34cm	14 1/2" / 36cm
Long - Centre Back	7	8 1/2" / 21cm	9 1/2" / 24cm	10 1/2" / 26cm	11 1/2" / 29cm	12 1/2" / 31cm	13 1/2" / 34cm	14 1/2" / 36cm

\*\* Chest measurement. Centre back length from neck to bottom hem.

1 Chest

2 Waist

3 Inside Leg

**HOW TO MEASURE**  
If you are the borderline between two sizes, select the smaller size for a tighter fit or the larger size for a looser fit.

**Chest** - Measure all the way round - across fullest part of the chest. Try to keep tape level.

**Waist** - Measure all the way round - Taking the tape around the natural waistline.

**Trouser - Inside Leg** - Unlike the other measurements which are body measurements, the inside leg measurement corresponds to the length on the trousers. Measure from the crotch to where your trousers normally wear on the shoe.

**Shorts - Inside Leg** - This is the short's measurement, not body.

MEASUREMENT - cm	XS	S	M	L	XL	2XL	3XL	4XL
Chest	86-91cm	91-96cm	96-101cm	101-106cm	106-111cm	111-116cm	116-121cm	121-126cm
Waist	71cm	76cm	81cm	86cm	91cm	96cm	101cm	106cm
Trouser - Inside leg	76cm	76cm	81cm	81cm	81cm	81cm	86cm	86cm

MEASUREMENT - inches	XS	S	M	L	XL	2XL	3XL	4XL
Chest	34 - 36"	36 - 38"	38 - 40"	40 - 42"	42 - 44"	44 - 46 1/2"	46 1/2 - 48 1/2"	48 1/2 - 50 1/2"
Waist	28"	30"	32"	34"	36"	38"	40"	42"
Trouser - Inside leg	30"	30"	32"	32"	32"	32"	34"	34"

Shorts - inches/cm	XS	S	M	L	XL	2XL	3XL	4XL
Short - Waist - inches	28"	30"	32"	34"	36"	38"	40"	42"
Short - Waist - cm	71cm	76cm	81cm	86cm	91cm	96cm	101cm	106cm
Training Short - Inside leg - cm	11.5cm	14.5cm	17.5cm	18.5cm	19.5cm	20.5cm	21.5cm	22.5cm
Football Short - Inside leg - cm	18cm	18cm	18cm	18cm	18cm	18cm	18cm	18cm
Rugby Short - Inside leg - cm	30cm	30cm	30cm	30cm	30cm	30cm	30cm	30cm

\*\* The length of Men's Shorts varies according to style.

1 Chest

2 Waist

3 Inside Leg

**HOW TO MEASURE**  
If you are the borderline between two sizes, select the smaller size for a tighter fit or the larger size for a looser fit.

**Chest** - Measure all the way round - across fullest part of the chest. Try to keep tape level.

**Waist** - Measure all the way round - Taking the tape around the natural waistline.

**Inside Leg** - Unlike the other measurements which are body measurements, the inside leg measurement corresponds to the length on the trousers. Measure from the crotch to where your trousers normally wear on the shoe.

MEASUREMENT - cm	7-8 years	9-10 years	11-12 years	13-14 years
Chest	61-66cm	66-71cm	71-76cm	81-86cm
Waist	51-56cm	56-61cm	61-66cm	66-71cm
Height	122-126cm	131-136cm	141-146cm	151-156cm
Inside leg	55cm	65cm	75cm	75cm

MEASUREMENT - inches	7-8 years	9-10 years	11-12 years	13-14 years
Chest	24"- 26"	26"- 28"	28"- 30"	32"- 34"
Waist	20"- 22"	22"- 24"	24"- 26"	26"- 28"
Height	48 - 50"	52"- 53"	57"- 58"	63"- 64"
Inside leg	22"	26"	29"	29"

Shorts - inches/cm	7-8 years	9-10 years	11-12 years	13-14 years
Waist - inches	22"- 23"	24 - 24"	26 - 26"	27"- 28"
Waist - cm	57 - 58cm	61 - 61cm	66 - 66cm	69 - 71cm
Training Short - Inside leg - cm	13cm	16cm	18cm	18cm
Football Short - Inside leg - cm	18cm	18cm	18cm	18cm
Rugby Short - Inside leg - cm	30cm	30cm	30cm	30cm

\*\* The length of Men's Shorts varies according to style.



[www.owzat-cricket.co.uk](http://www.owzat-cricket.co.uk) | [info@owzat-cricket.co.uk](mailto:info@owzat-cricket.co.uk)

**0800 542 8711**